

IMPLEMENTING AN HCV PROGRAM IN AN ESTABLISHED ASO DURING THEIR TRANSITION TO COMMUNITY HEALTH



Amanda Goodpasture

**HCV Navigator
Equitas Health, Columbus, Ohio**

Maria Brown, CDCA

**HCV Navigator
Equitas Health, Dayton, Ohio**

Disclosure :

The HCV Navigation Program at Equitas Health is funded by a FOCUS Grant from Gilead Science Inc.

Funds were used solely for the purpose of increased HCV testing and Linkage To Care.

No funds were used in relationship to Gilead products.

FOCUS Grant

- ▶ Identify people living with Hepatitis C (HCV) using rapid antibody testing
- ▶ Connect Antibody positive clients to confirmatory testing
- ▶ Link HCV positive clients to medical care
- ▶ Help Equitas Health patients begin and complete HCV treatment

Getting up to speed:

Onboarding

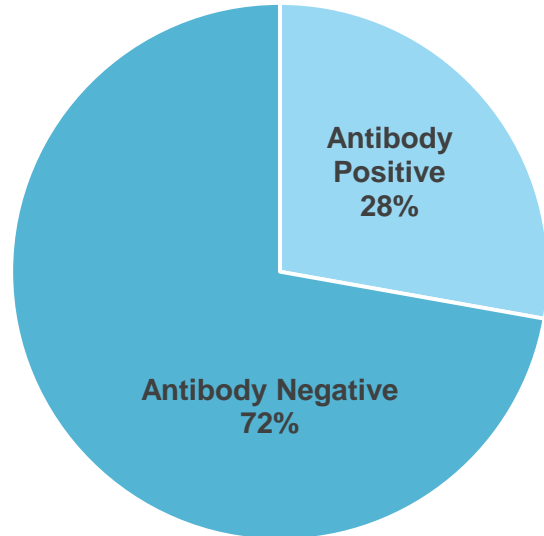
- ▶ HIV, HCV, STI 101
- ▶ HIV Test counselor Training
- ▶ HCV Tester Training
- ▶ Phlebotomy
- ▶ Epic Training (EMR)
- ▶ Efforts to Outcomes (ETO) Training
- ▶ Certified Application Counselor Training

What we do :

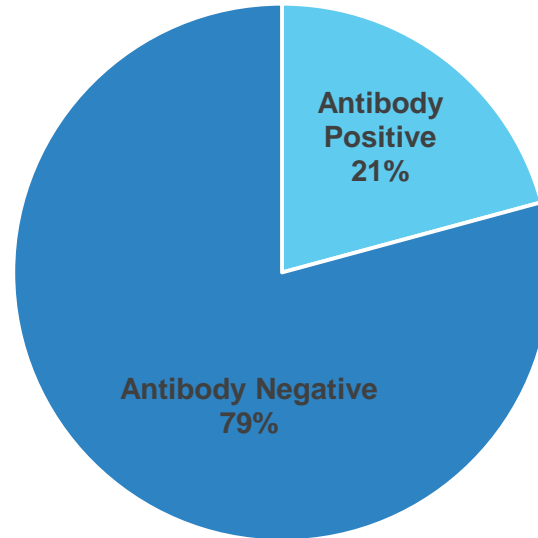
- ▶ Community Based Testing
- ▶ Insurance Enrollment
- ▶ Linkage to Care
- ▶ Prior Authorization
- ▶ Patient Education
- ▶ Community Education
- ▶ Linkage to Community Support Services

Hepatitis C Antibody Testing

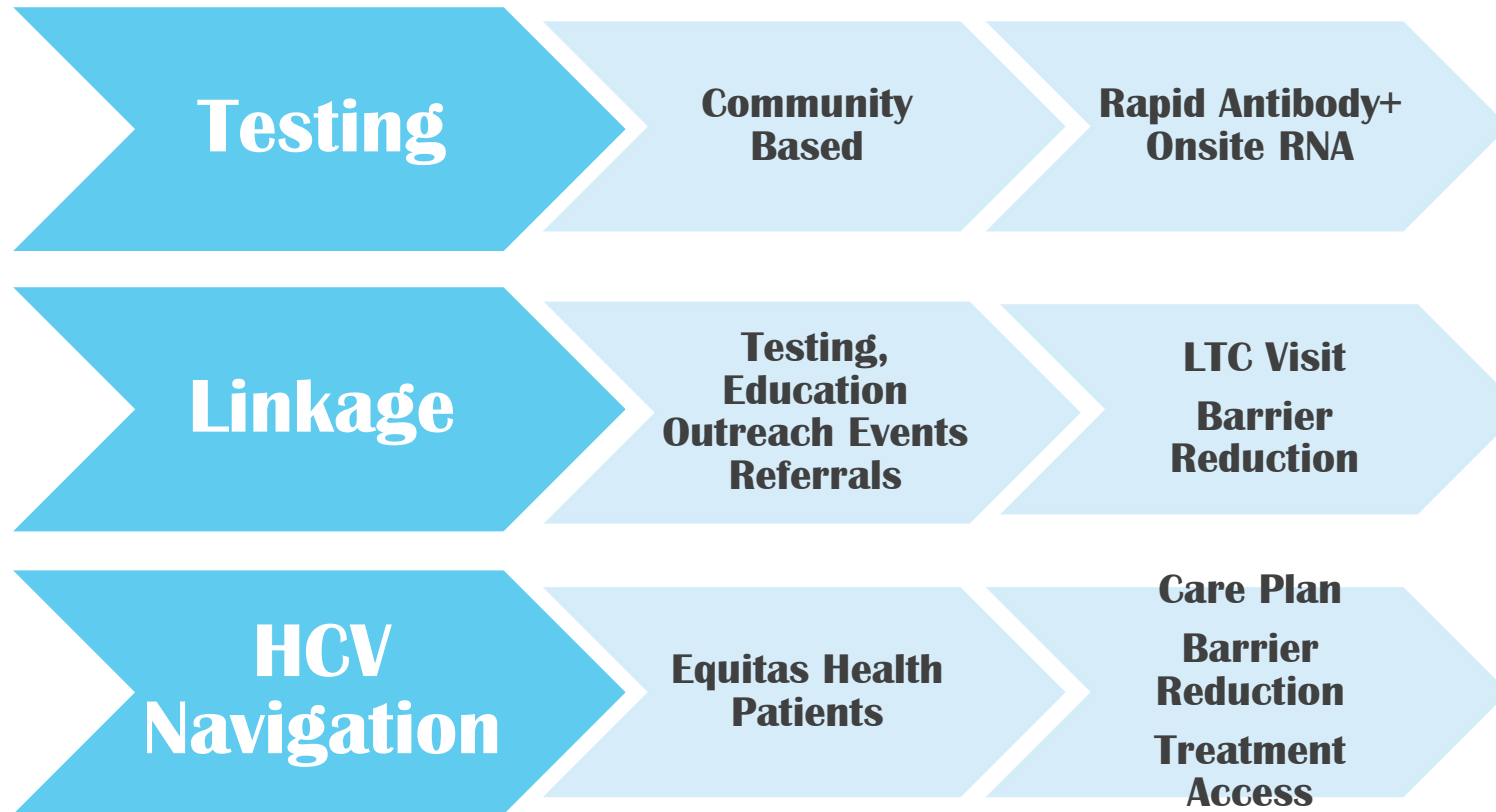
Dayton HCV Testing
8/16-8/17



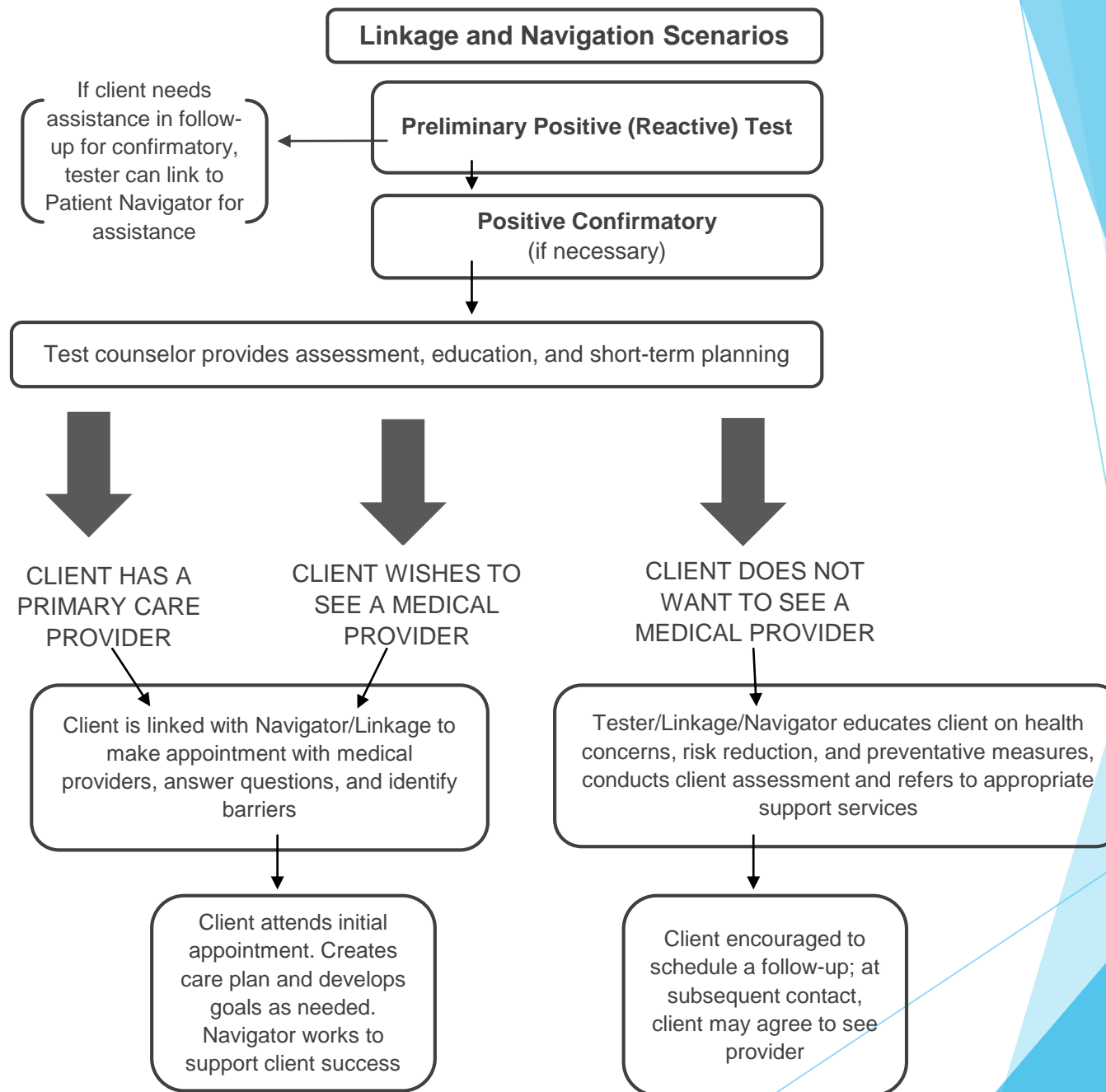
Columbus HCV Testing
8/16-8/17



HCV Patient Navigation Overview



PROCESS

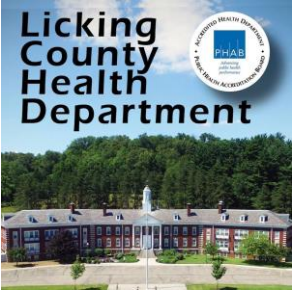


Success: Partnerships



Public Health
Prevent. Promote. Protect.

Greene County



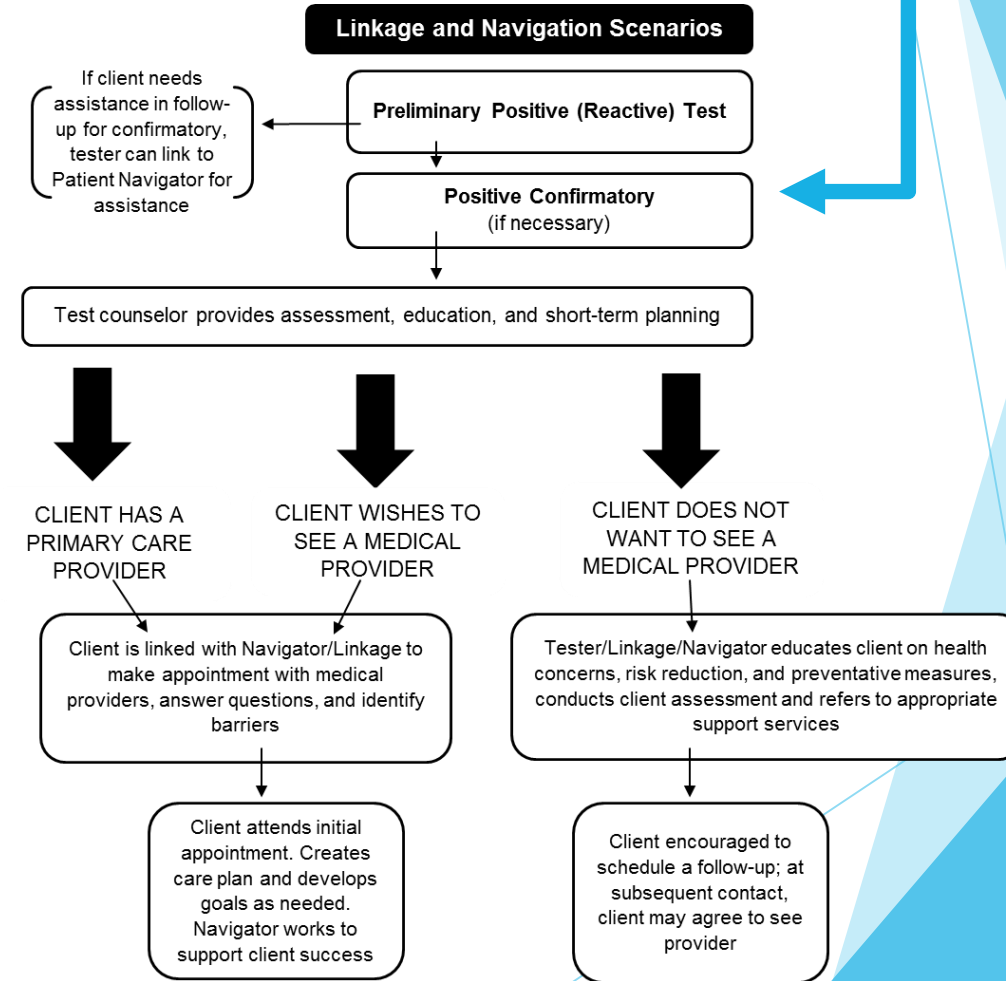
St. Vincent de Paul
ASSISTANCE • SHELTER • HOPE



Challenge: RNA Testing

- ▶ Ability to draw in the field
- ▶ Difficult blood draws
- ▶ Establishing relationship with lab
- ▶ Billing Concerns

Positive Confirmatory



Success:

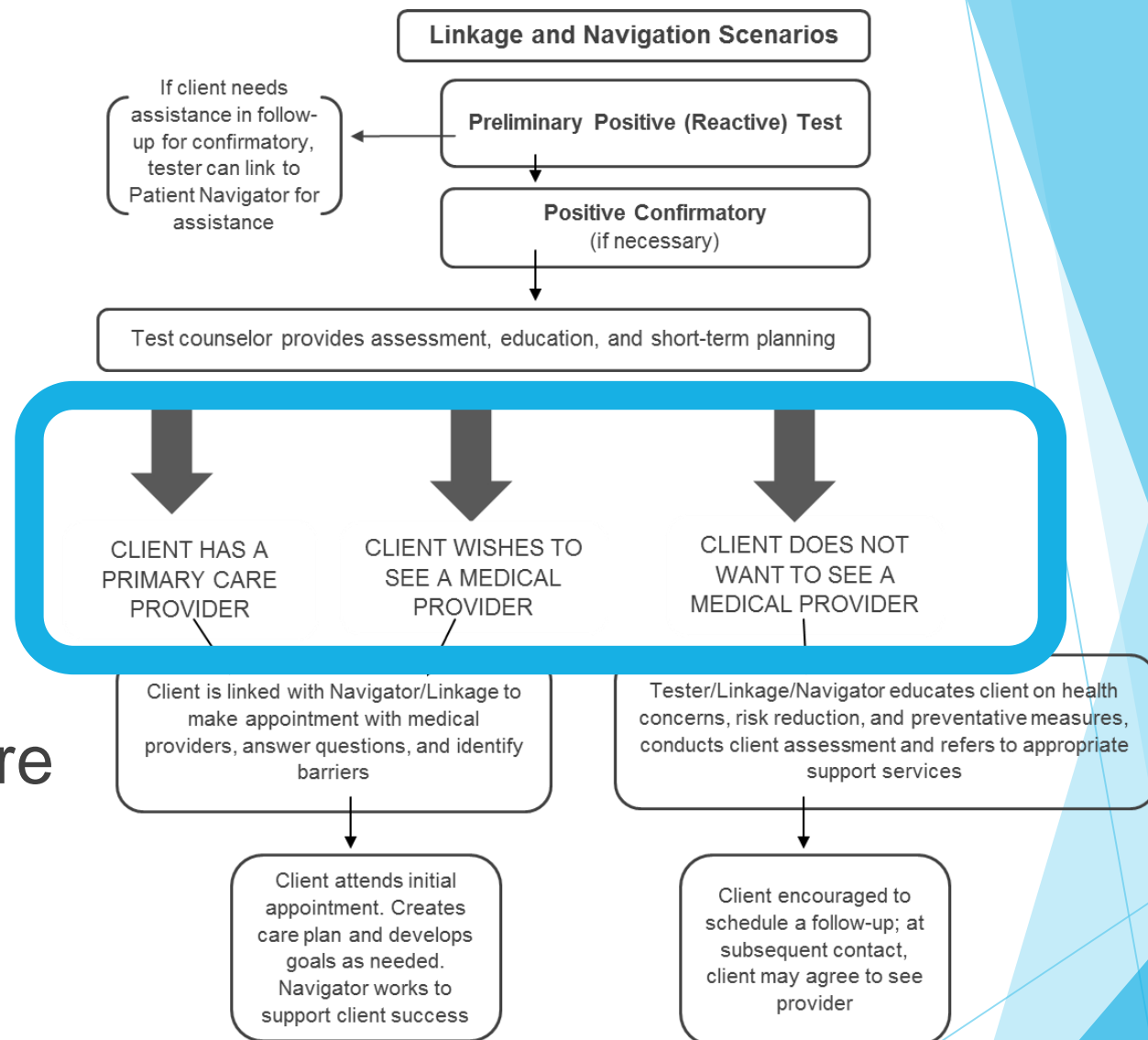
Integration into Medical Center

- ▶ Role Definition
- ▶ Linkage to Care- Internal & External Referrals
- ▶ Patient Navigation
- ▶ Epic: Communication and documentation
- ▶ Prior Authorizations

Challenge: Initiating Care

Barriers

- ▶ Health Literacy
- ▶ Lack of Insurance
- ▶ Motivation to Enter Care
- ▶ Substance Use
- ▶ Other Socioeconomic Concerns



Challenge: Accessing Treatment

Ohio | Department of
Medicaid

HealthCare.gov



ODI
Ohio Department
of Insurance

covermymeds®



PRIOR AUTHORIZATION

Case Studies



Private Insurance Case Study

- 40 year old woman, Ab+ at community-based testing event
- Requested help with next steps
 - Wants care at Equitas → Patient Navigation Program
 - Created Care Plan
- Husband has strong mistrust of medical providers but wanted testing.
 - Performed test/risk assessment on-site
 - Antibody test was non-reactive
 - Risk Assessment completed and f/u testing scheduled
- Patient attended all scheduled medical appointments with Navigator accompaniment.
- Began HCV treatment > 1 month after receiving reactive antibody test > SVR

Medicaid Case Study

- 38 year old woman, Ab+ a jail testing event
- Requests help with next steps
 - Wants care at Equitas → Linkage to Care → Patient Navigation Program
 - Created Care Plan at LTC jail Visit; Scheduled initial appointment
 - Addressed Barriers: housing stability, insurance
- Attends initial medical appointment= Successful LTC
 - Confirmatory RNA Testing/Tx readiness assessed
 - Re-engaged with Primary Care/Comorbid Conditions addressed
- Patient attends all scheduled medical appointments with Navigator accompaniment.
- Currently unable to access treatment due to low fibrosis score

Pro Tips

You Don't Know what you Don't Know Until you Know It

- ▶ Ability to communicate within EMR
- ▶ Access to skilled phlebotomists
- ▶ Balance Test Sites between those with high positivity and high opportunity for follow up



Amanda Goodpasture
Equitas Health
4400 N High St, Suite 300
Columbus, OH 43201
614-340-6777 Ext. 333
amandagoodpasture@equitashealth.com



Maria Brown
Equitas Health
1222 S Patterson Blvd,. Suite 230
Dayton, OH 45402
937-853-3650 Ext. 2113
mariabrown@equitashealth.com